

REDUCER I

OBSERVATIONAL STUDY

CORONARY SINUS REDUCER FOR TREATMENT OF REFRACTORY ANGINA PATIENTS: SEX SPECIFIC OUTCOMES ¹

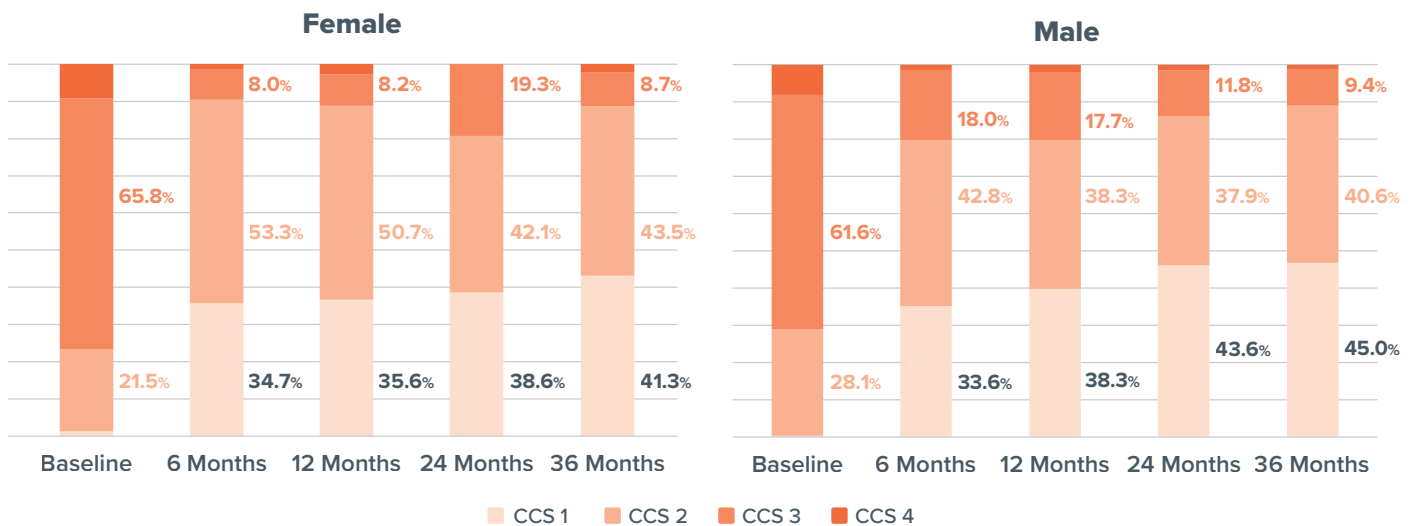
REDUCER I is a prospective, open-label, multi-centre, international, post-market study which collects long-term data of patients with refractory angina treated with the Shockwave™ Reducer

SEX SPECIFIC SUB-ANALYSIS RESULTS

Both female and male REDUCER I patients showed similar, significant improvement in angina reduction (change in Canadian Cardiovascular Society Class (CCS)), significant vs baseline and no difference in MACE-free survival at 12 months among both cohorts.

Canadian Cardiovascular Society Class

Female and male patients showed similar, significant improvement in angina CCS class reduction at 12, 24, and 36 months and significantly greater improvement for females at 6 months



Angina CCS Class Reduction

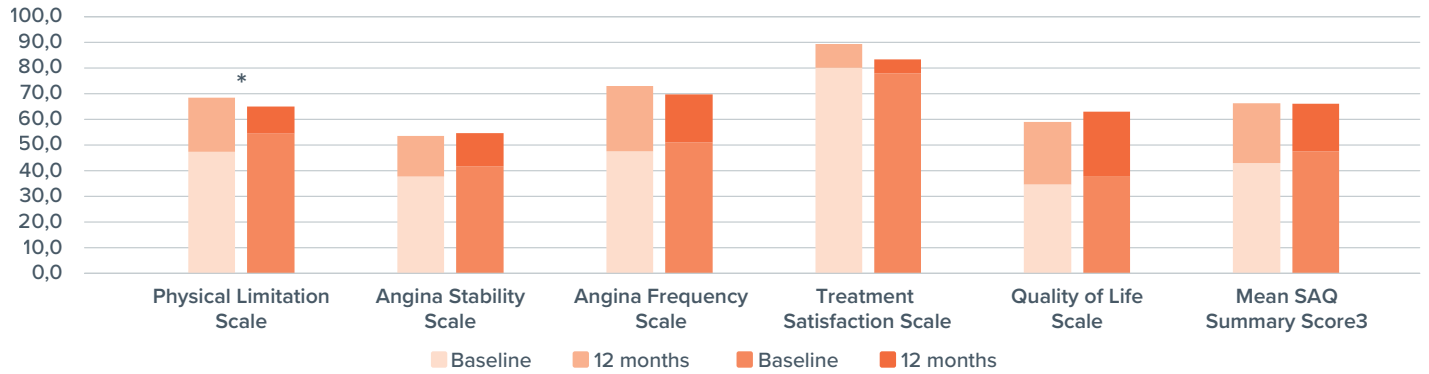
Both female and male cohorts had improved CCS class at 12, 24 and 36 months with no significant differences between the groups, except at 6-months, favoring females.



Seattle Angina Questionnaire (SAQ)

Both female and male cohorts had significant SAQ improvements compared to baseline ($p \leq 0.001$)*

Female cohort had lower baseline SAQ subdomain scores,[†] with exception of Treatment Satisfaction Scale

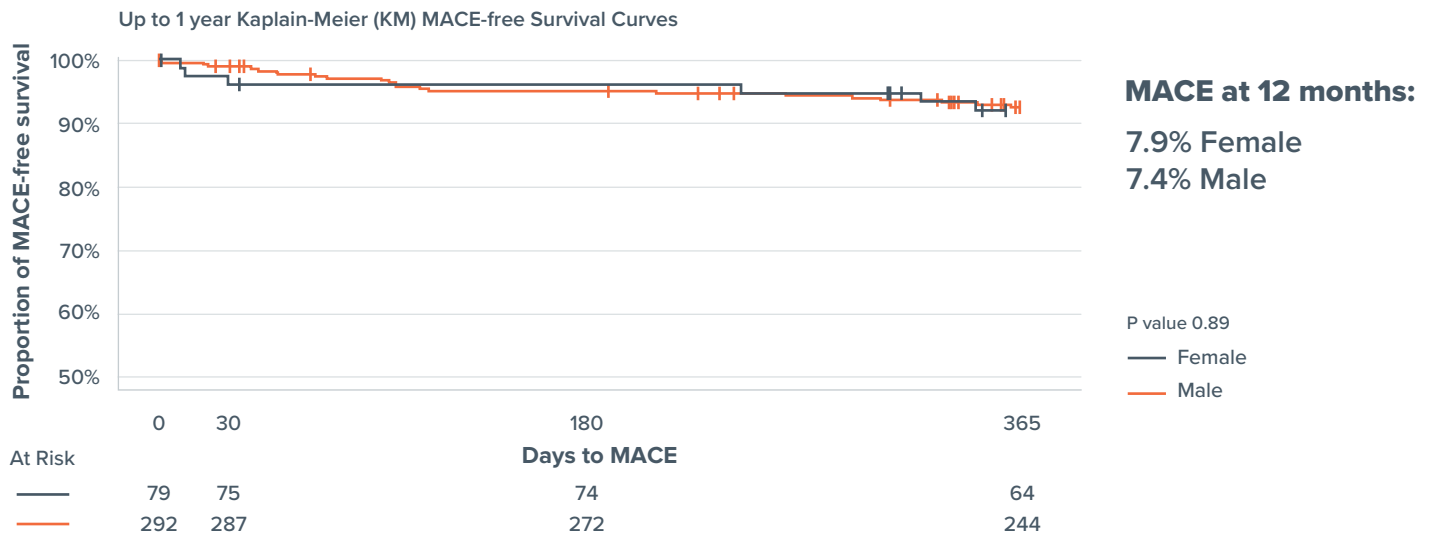


*Female patients had greater physical limitation scale improvement at 12 months compared to males ($p=0.0005$)

†Female patients had lower physical limitation scale scores at baseline ($p=0.05$)

Major Adverse Cardiovascular Events

No significant difference in MACE-free survival between female and male patients



* MACE defined as: cardiac death, major stroke, and MI

KEY TAKEAWAYS FROM THE REDUCER I SEX SPECIFIC DATA

Female and male patients experienced similar significant improvements in CCS angina class, quality of life, and low rates of MACE

- 81% improved ≥ 1 CCS class, **86%** at 36 months
- SAQ Summary score improvement of **21.1 points** at 12 months
- 7.9% KM rate of MACE at 12 months

Female Cohort

- Were less likely to have had prior CABG or a history of smoking
- Had lower Physical Limitation Scale at baseline and greater improvement at 12 months

First analysis to specifically compare female and male patients treated with the Shockwave Reducer

- Larger, prospective study needed

1. Verheye, S. (2025). Sex specific outcomes of treating patients with refractory angina with the coronary sinus reducer: One-year outcomes from the REDUCER-I registry. TCT 2025 Presentation.

CAUTION In the United States, Shockwave Reducer is an investigational device, limited by United States law to investigational use. The Reducer is subject of Investigational testing and is being studied in the COSIRA-II trial in Canada. The Reducer is commercially available in certain countries outside the U.S. and Canada. Please contact your local representative for specific country availability. Prior to use, please reference the Instructions for Use for more information on indications, contraindications, warnings, precautions and adverse events: ifu.sw-reducer.com

© 2025 Shockwave Medical Inc. All rights reserved. SPL 78258 Rev. A.

SHOCKWAVE
REDUCER